



Showroom Technical Specifications

Stage	2
Audio	4
Lighting	8
Vision	9
Backline	10
Rooms & Access	11
Floor Plan	12

Lighting Plan	13
Elevator Dimensions	14
Contacts	15

Technical Specifications Twin
Towns

Stage

Stage Dimensions

- Stage Width.....15m
- Stage Depth8m
- Stage Height.....4.5m
- Rear Stage Width.....9.5m
- Front edge of stage to FOH position.....14m
- Front edge of stage to Lighting position.....31m
- Audience floor to centre room ceiling.....6.2m

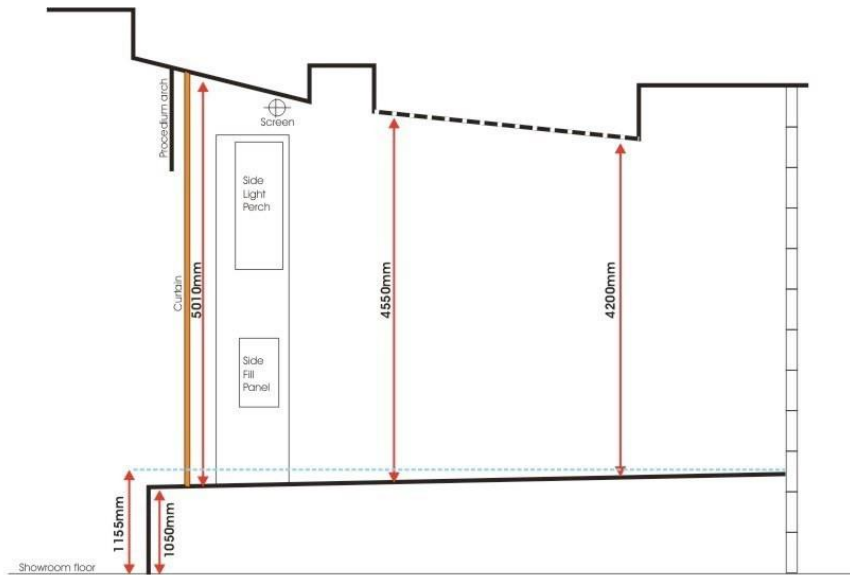
Access

- Showroom to stage access via pass door on both PS and OP side of stage
- Crossover locations PS to OP backstage
- Portable steps available from showroom floor to stage

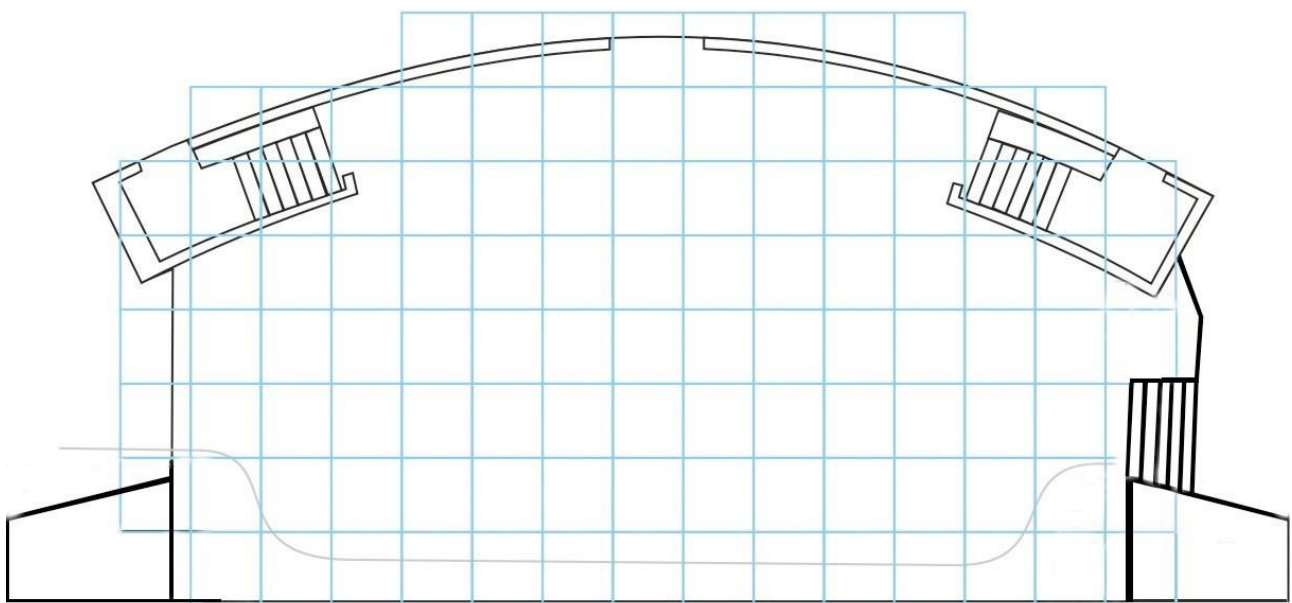
House Curtain

- Motorised front curtain (black) with control from either Lighting Bio, PS & FOH. French action.

Stage



Twin Towns Showroom - Stage Side Elevation
Cut Through Centre



Front of Stage

1m²

Audio

FOH Control

- 1 X Soundcraft Vi3000 Digital Mixing Console. 96 x inputs to mix, 48 x local analog inputs, 16 x local analog outputs, 24 x stereo busses & 4 x Lexicon Stereo FX engines.
- 1 x Soundcraft Vi Digital Stagebox. 64 physical mic/line inputs & 32 physical line outputs.

FOH Effects

- 1 x Soundcraft Realtime Rack

FOH Recording & Playback

- 1 X Fostex CR500 CD-R/RW Master Recorder

FOH Speakers

- L-Acoustics. K3. Line Array Speaker System
- With centre, side in fill and delay system
- With Stage lip fill

FOH Amplifiers

- 4 X L-Acoustics LA12x 4 channel Amplifiers
- 2 X L-Acoustics LA4x 4 channel Amplifiers

Audio cont'd

Monitor Control

- 1 X Soundcraft Vi3000 Digital Mixing Console. 96 x inputs to mix, 48 x local analog inputs, 16 x local analog outputs, 24 x stereo busses & 4 x Lexicon Stereo FX engines.
- 8 X Klark Teknik DN360 1/3 Octave Graphic EQ
- 1 X BSS FDS-344 MiniDrive Processor (Sidefills)
- 8 X Nexo PS15-R2
- 2 X Nexo PS10-R2
- 1 x Nexo LS18 Sub
- 2 X Nexo PS8
- 2 X AT Professional FR07 (Sidefills) comprising of 2 x 15" + 2" Horn
- 4 X AT Professional SFM09 Low Profile Monitor comprising of 1 x 8" + 1 x 8' coaxial
- 4 X AT Professional SFM24 Stage Monitor comprising of 1 x 12" + 2" Horn
- 4 X AT Professional SFM03 Concert Wedge comprising of 1 x 15" + 2" Horn

Monitor Amplifiers

- 2 X Nexo NXAMP 4X4 Powered TD Controller
- 3 X AT Professional E-3500 Power Amplifier
- 4 X Ecler DT6800 Digital Power Amplifier

Microphones

- 5 X AKG C451B
- 1 X AKG D112
- 2 X AKG C414 XLII (Matched stereo pair)
- 1 X Beyerdynamic M88
- 1 X Beyerdynamic M69
- 3 X Beyerdynamic TGX5
- 1 X Shure Beta 52A
- 1 X Shure Beta 91
- 4 X Shure Beta 98/S
- 2 X Shure Beta 57A
- 3 X Shure Beta 58A
- 3 X Shure Beta 87
- 4 X Shure SM57
- 5 X Shure SM58

Audio cont'd

- 3 X Sennheiser MD421
- 2 X Sennheiser MD441
- 3 X Sennheiser E604
- 2 X Sennheiser E906

Radio Microphone System

2 X Shure ULXD4 System Beta 58a capsules

1 X Shure Axient System comprising of:

- 1 X AXT600 Spectrum Analyser
- 2 X AXT400 Dual Channel Receivers (4 Channels total)
- 1 X AXT900 Charging System
- 4 X AXT200 handheld transmitters w/ Beta 58a capsules
 - interchangeable - 2 X KSM9 capsules, 1 X Beta 87A capsule
 - 2 X Shure AXT100 body-pack transmitters
 - interchangeable - 2 X WCM16 head-worn condenser mic

DI Units

- 3 X SCV DI2Mk2 Active DI
- 1 X SCV DI2Mk3 Active DI
- 5 X Countryman Type 85 FET Active DI
- 3 X Radial JDI Passive DI
- 2 X Radial J48 Active DI
- 2 X Radial ProAV2 Multimedia DI

Microphone Stands

- 3 X K&M Tri Base Tall Booms
- 4 X Tama Tri Base Tall Booms
- 3 X Hercules Tri Base Tall Booms
- 1 X Ultimate Tri Base Tall Boom
- 2 X K&M Round Base Tall Booms
- 2 X K&M Round Base Straight
- 3 X Hercules Round Base Straight
- 5 X K&M Tri Base Short Booms
- 4 X Hercules Round Base Short Booms
- 1 X Tama Tri Base Short Boom

Audio cont'd

- 1 X K&M Tri Base Extra Short Boom - Kick

Risers

- 10 X 1200mm x 2000mm with wooden surfaces
- Carpets and steps to suit
- 2 X 1200mm x 2000mm with carpeted surfaces
- Leg Heights of 1' and 2 ' available

Production Communication Systems

- Clear-com Tempest 2.4GHz (Base station + 2 wireless Sub-packs)
- 5 X Station Jands Ezicom system with Beyerdynamic Headsets
(Stage R, FOH OP, Lighting OP, Followspot OP's)

Audio Power

- 2 X 32 Amp 3 Phase with distribution board for stage power outlets

Misc

- Williams AV IR-T2-04 Transmitter and 12+ receivers for the hearing impaired. (First 8 rows)

Lighting

Lighting Control

- 1 X Avolites Arena with expansion playback wing (main)
- 1 X Avolites Pearl Expert Pro with touch wing (backup)
- 1 X ETC Smart Fade (House Lighting)
- 1 X Chauvet Professional Net-XII Ethernet-to-DMX node
- 1 X LuminRadio TX wireless DMX transmitter (1 universe)

Please note this ArtNet Backbone provides 8 DMX universes, currently the first 4 universes are in use by the house LX system.

Lighting Power

- 120 X Dynalite 2.4 Digital Production Dimmers

Generic Fixtures

- 72 X 240V Super Par 64 (Assorted MFL, NSP, VNSP)
- 44 X Raylites 500W
- 4 X Acclaim 650W Zoomspots
- 12 X Prolite 1kW Zoomspots
- 2 X Lycian 1272 Follow Spots

Intelligent Fixtures

- 12 X Martin Mac 101 LED wash RGBW
- 8 X Light Sky F230 Extreme Beams
- 8 x Martin LED Rush Par 2
- 4 X Robe Robin 300 LED wash RGB
- 4 x Robe Viva Profile LED
- 4 x Robe Viva CMY Profile LED

Lighting Effects

- 32 X Tour Pro SlimPar 12 LED RGBW
- 4 X Tour Pro Storm 1000 LED RGBW
- 8 X Tour COB LED RGBW
- 1 X 20" Mirror Ball with motor
- 1 X Robe FT400 Hazer
- 12 X iLED Apari Spot LED Truss warmers RGBW
- 1 X Architectural LED Strip (Stage Border) **Lighting Misc**

- 2 X Global Box Truss @ 1m
- 2 X Global Box Truss @ 1.5m
- 2 X Global Box Truss @ 2m

Vision

Main Screen and Projector

- 1 X 4m H x 6m W motorised, front projection screen
- 1 X Eiki LC-HDT1000 Full HD Theatre Projector @ 10,000 ANSI lumens
<http://www.eiki.com/usa/products/projectors/hd-widescreen/lc-hdt1000>

Side of Stage Screens and Projectors

- 2 X 1.8 H x 3.2m W fixed, front projection screens
- 2 X Epson EB-915W Projector @ 3200 ANSI Lumens

FOH AV

- 1 X Kramer VP-41H 4 in 1 out HDMI switcher
- 1 X Sony DVD Player
- 2 X Kramer VP-728 Video Scaler/Switcher
- 1 X Kramer VP-770 Video Scaler/Switcher
- 1 x Apple Mini Mac Computer for Audio and or Visual Playback

Feed from FOH position to both centre and side projectors is full HD over fibre optic with HDMI.

Side of stage, front of stage and Bio Box vision patch points via VGA or HDMI over CAT6 are also available.

Backline

The following stage equipment is available upon request:

- 1 X Vase Trendsetter 60 All Valve Guitar Amplifier
- 1 X Vase 4 X12 Cabinet
- 1 X Gallien Krueger 800RB Bass Head
- 1 X Ampeg CLASSIC SVT-410HLF Bass Quadbox
- 1 X Yamaha C7 White Grand Piano
- 5 X Music Stands with sconce lights

1 X Tama Superstar Hyper-Drive Drum kit comprising of:

- 1 X 22" X 18" Kick Drum
- 1 X 10" Tom
- 1 X 12" Tom
- 1 X 14" Floor Tom
- 1 X 16" Floor Tom
- 1 X 14" Snare

1 X Sabian Cymbals comprising of:

- 2 X 14" AAX Hi Hats
- 1 X 16" Xplosion Crash
- 1 X 18" Xplosion Crash
- 1 X 20" Ride
- 1 X 18" AAX Chinese Cymbal

Rooms & Access

Dressing Rooms

- 1 X Main artist room or 6-7 people with shower, toilet, fridge and air-conditioning • 1 X Support artist room or 2-3 people with air-conditioning
- 1 X Band room or 9-10 people with bar fridge, shower, toilet and air-conditioning

*Dressing rooms are located on Level 4 with access via internal stairs or service lift to stage level. All dressing rooms have access to stage CCTV with audio feed from FOH.

- 1 X Tune up / quick change / immediate room with fridge, air conditioning, and stage CCTV.

* Immediate room is located on Level 5 (stage level). Toilet facilities are also located backstage on this floor.

* Iron and ironing board are available upon request.

Floor Plan

Twin Towns Showroom Seating



View from Row ZB



View from Row SS



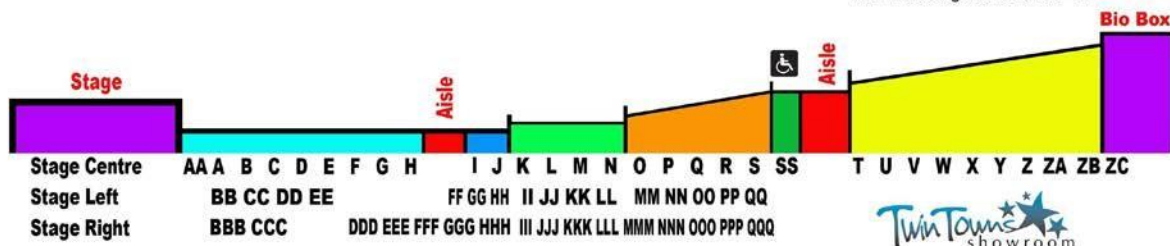
View from Row O



View from Row H



View from Stage to Rows AA - ZB



View from Seat MM1

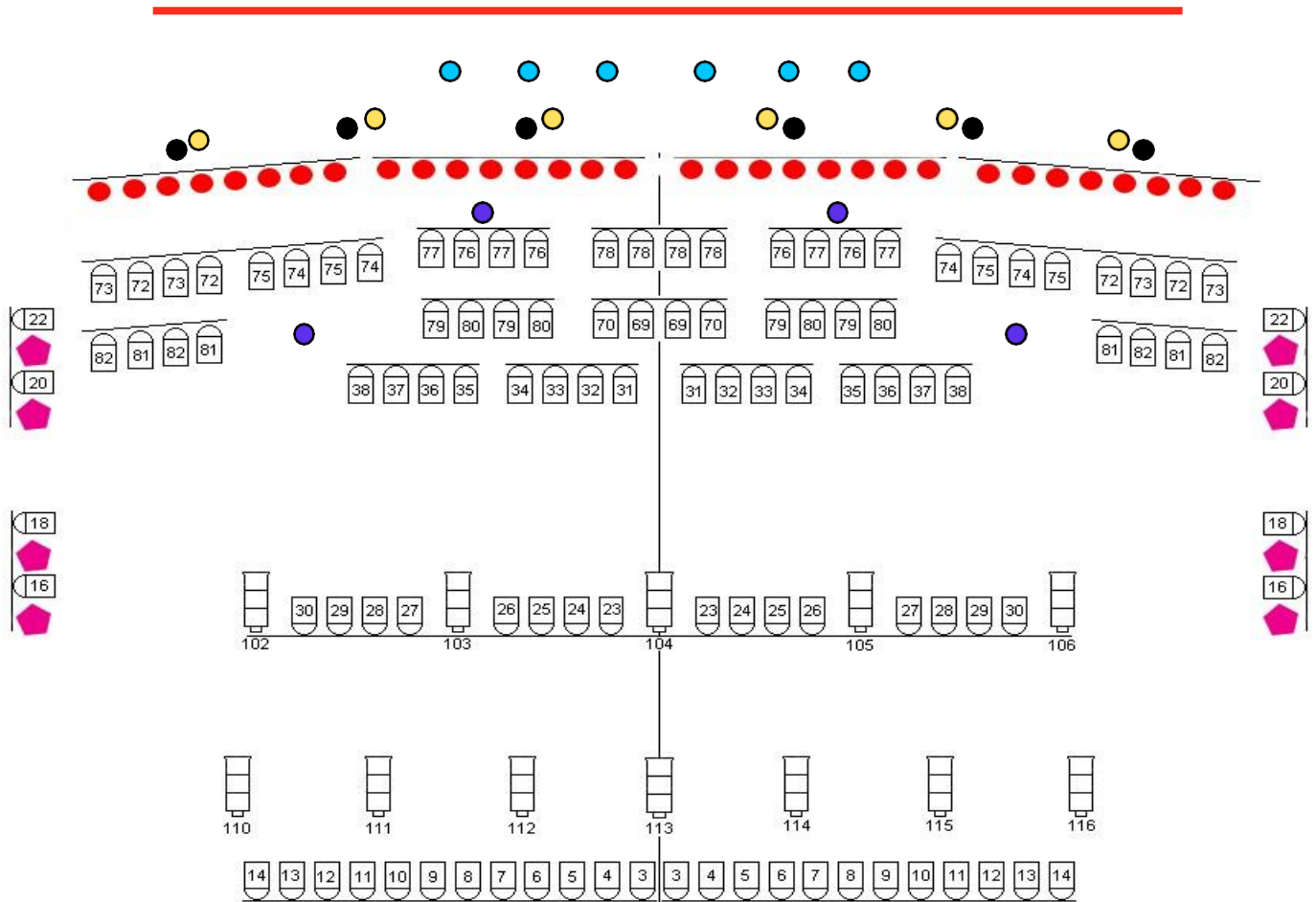


Joe, Ross, Daryl, James and friends.



Don McLean sings American Pie

Lighting Plan



- - iMove Acme 1200 Spot - Grid Mounted
- - Lightsky F230 Extreme Beam - Mounted on vertical truss
- - Lightsky F230 Extreme Beam - On stage wing
- - Martin Mac 101 RGBW Grid Mounted
- - Martin Mac 101 RGBW Outrigged on Vertical Truss

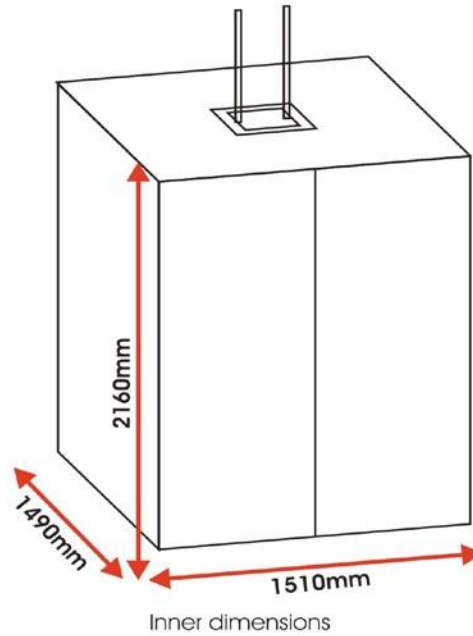
- Tour Pro Slim Par 12 RGBW

- Martin Rush Par 2

Elevator Dimensions

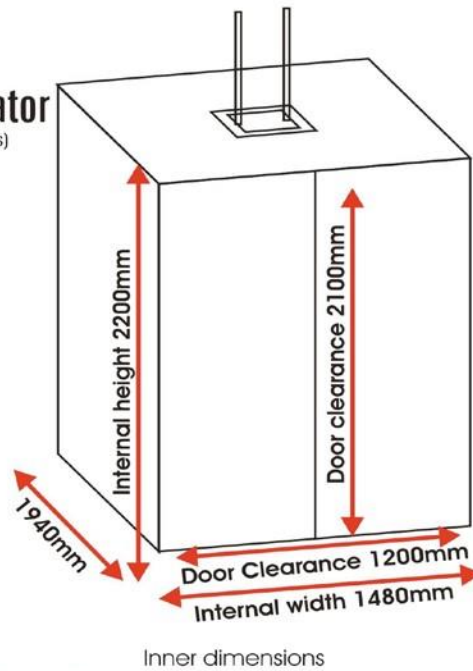
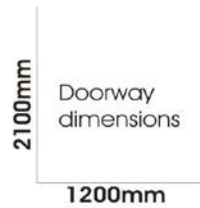
Service Elevator

Ground Floor Loading Dock to
Showroom Level 6 Back Stage



Millennium Tower Elevator

Ground Floor to Showroom Foyer (Stars)



Twin Towns Elevator Dimensions

Contacts

**Twin Towns Services Club is located at Wharf Street
(Cnr Boundary Street)Tweed Heads, NSW, 2485.**

Light and Sound - Duty Technician

- 07 5599 0272

Light and Sound Co-ordinator

- 07 5599 0248

Booking Office

- 1800 014 014 or 07 5599 0213

Box Office - Located on level 5, outside showroom doors - Opens 5.15pm for evening shows - Opens 2 hours prior to a morning show

- 07 5599 0246

Entertainment Co-ordinator - Lachlan Donaldson

- 07 5599 0447

Conference and Convention Manager - Chris Thomas

- 07 5599 0247